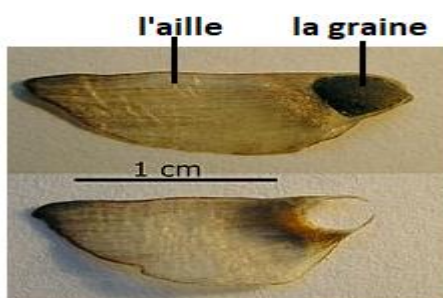
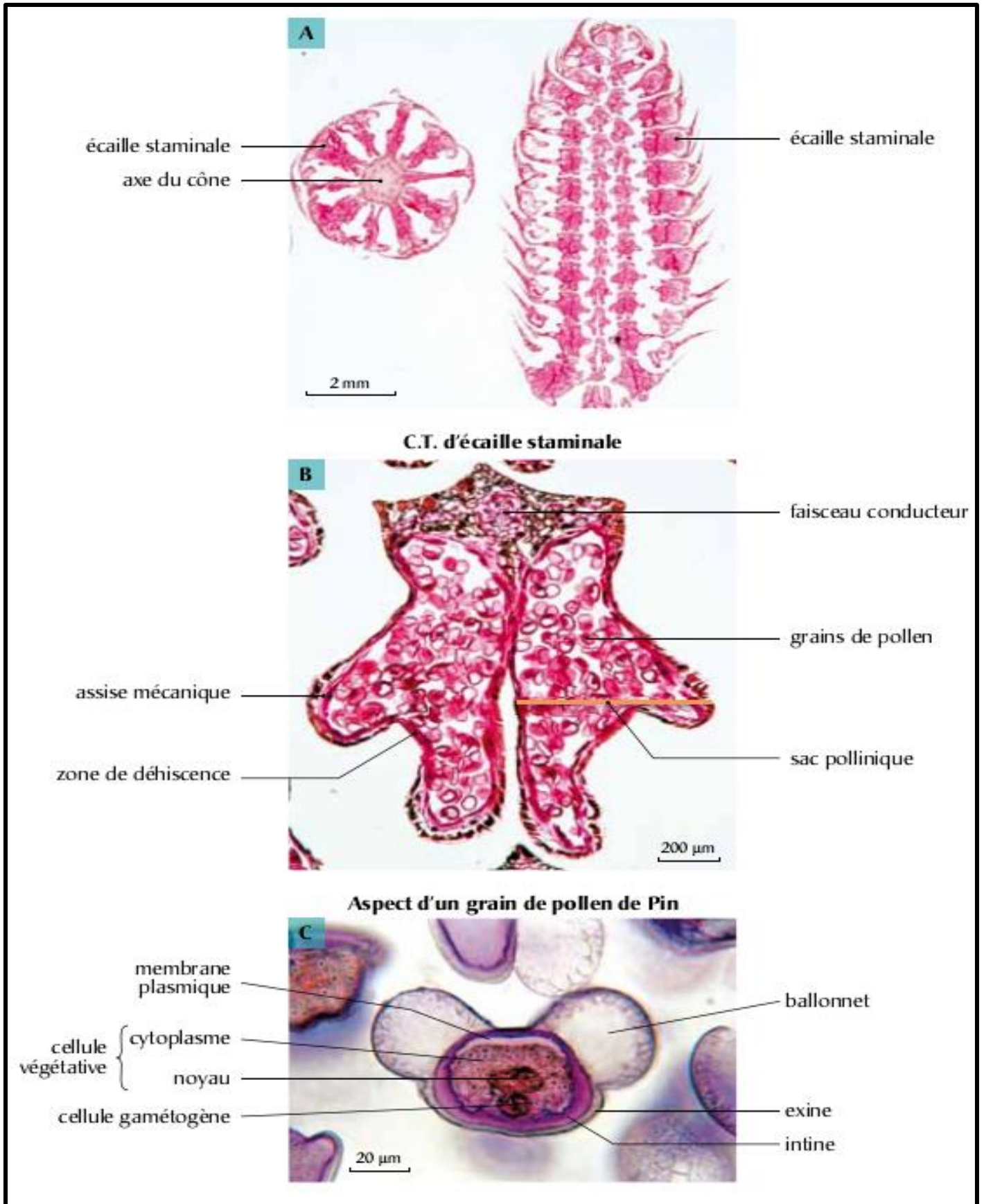


Représentation schématique des étapes de la formation d'un grain de pollen chez le pin

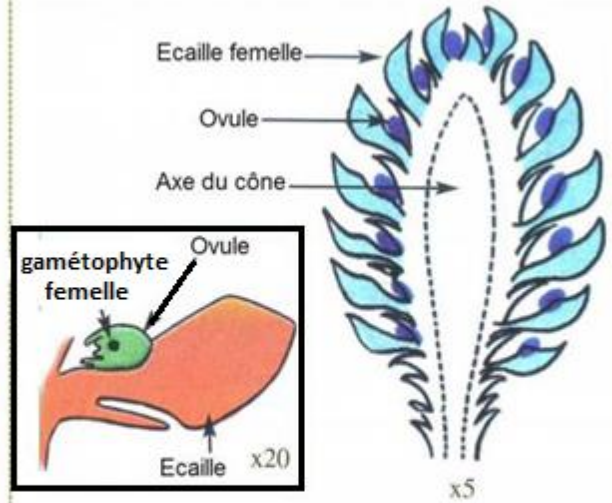
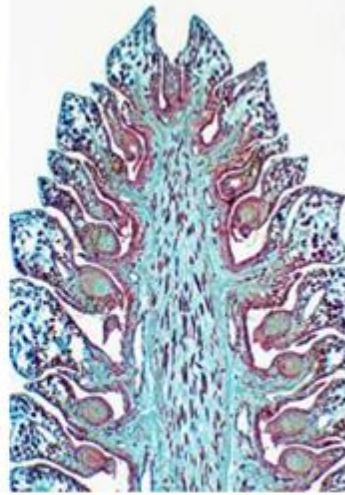




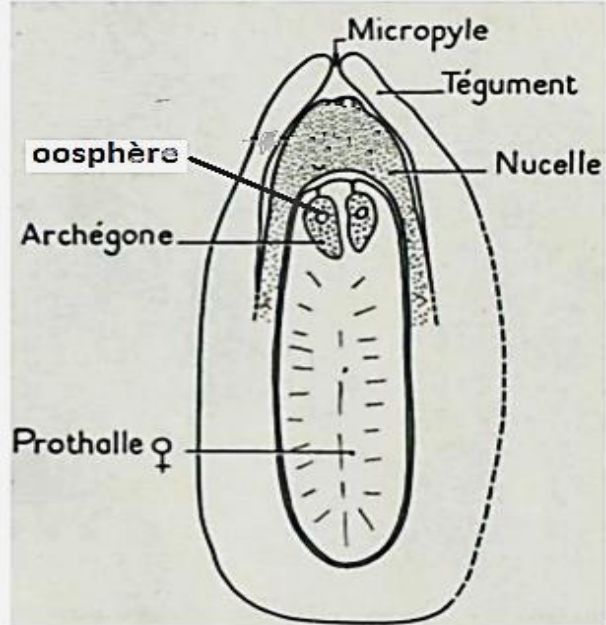
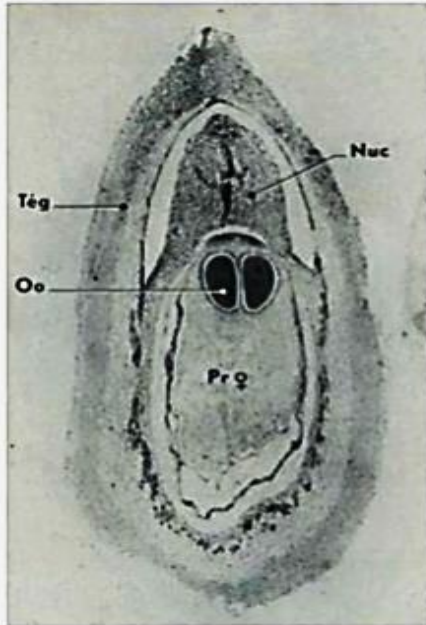




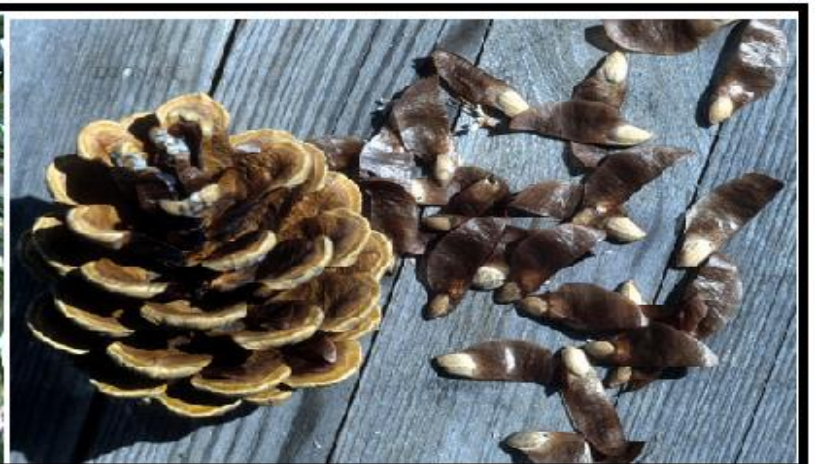
des cônes femelles



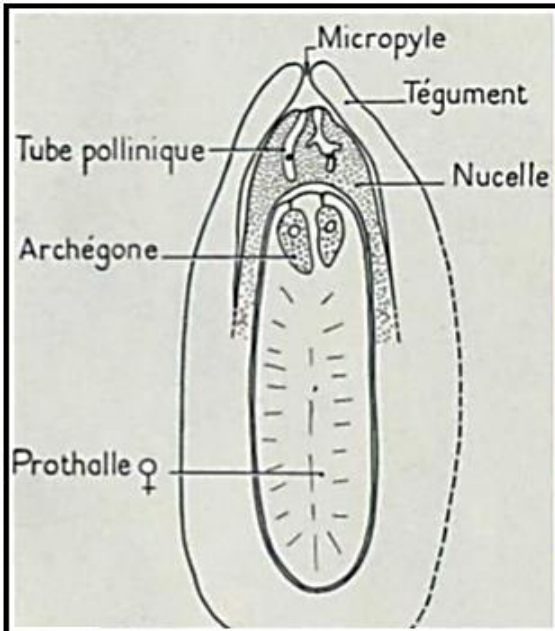
Observation microscopique d'une coupe longitudinale d'un cône femelle et schéma interprétatif



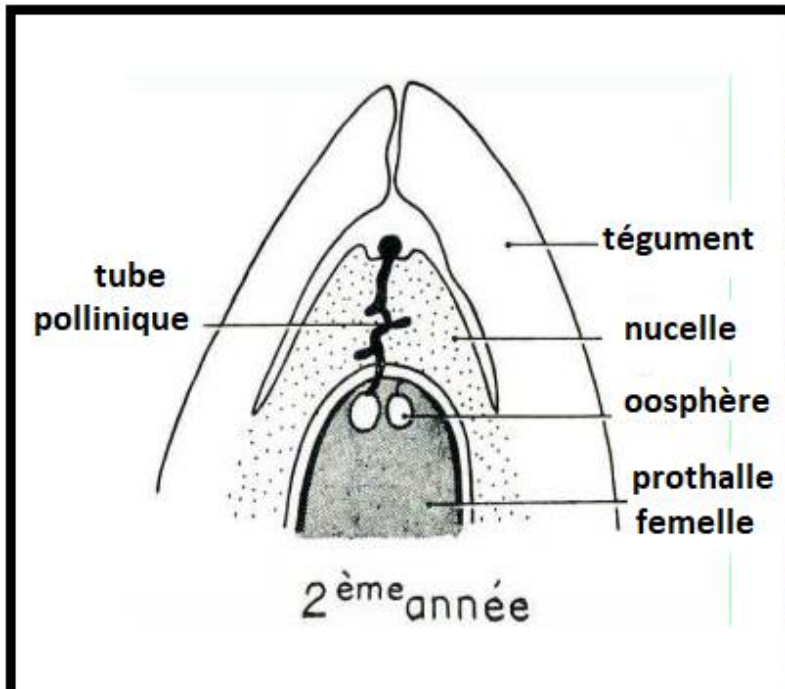
Observation microscopique d'une coupe longitudinale d'un ovule mature et schéma interprétatif.







cône femelle pollinisé



graines de pin



graines de pin décortiquées



germination des graines de pin



