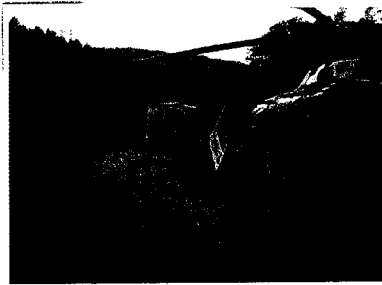


In an emergency, an ambulance can make the difference between life and death. But what if you live in an area where road travel is slow and difficult? How can you get emergency treatment fast when the nearest hospital is hours away?

In Wales, they have come up with a solution to this problem. Wales is a mountainous country and there are many areas which are not easy to reach by road. For this reason, the Wales Air Ambulance service uses helicopters to take people to hospital.



The speed of the Wales Air Ambulance is impressive. For example, in a recent road accident, the Wales Air Ambulance crew arrived on the scene in eight minutes. They took the male driver who had serious head injuries to the nearest hospital. The journey took just fifteen minutes and this saved a lot of time.



Of course, the Wales Air Ambulance is not cheap to run. Every flight costs an average of £1000. The amazing thing is that the Wales Air Ambulance is a charity. Every penny comes from the public. The people of Wales feel very lucky to have this service, however, and do all they can to support it.

A- Read the text and write the main idea

.....

.....

B- Read the text and write True or False

- 1- Some places in Wales are difficult to reach
- 2- The Wales Air Ambulance arrived at the nearest hospital in eight minutes
- 3- The cost of running the Wales Air Ambulance is about £1000 per year.
- 4- The Welsh government provides the money to pay for the Wales Air Ambulance

C- Circle the correct meanings

- 1- service (paragraph2)
 - a- an organization that provides what people need
 - b- an organization that builds things
- 2- speed (paragraph3)
 - a- fast movement
 - b- work
- 3- crew (paragraph3)
 - a- team of people
 - b- helicopter
- 4- support (paragraph4)
 - a- help
 - b- stop

